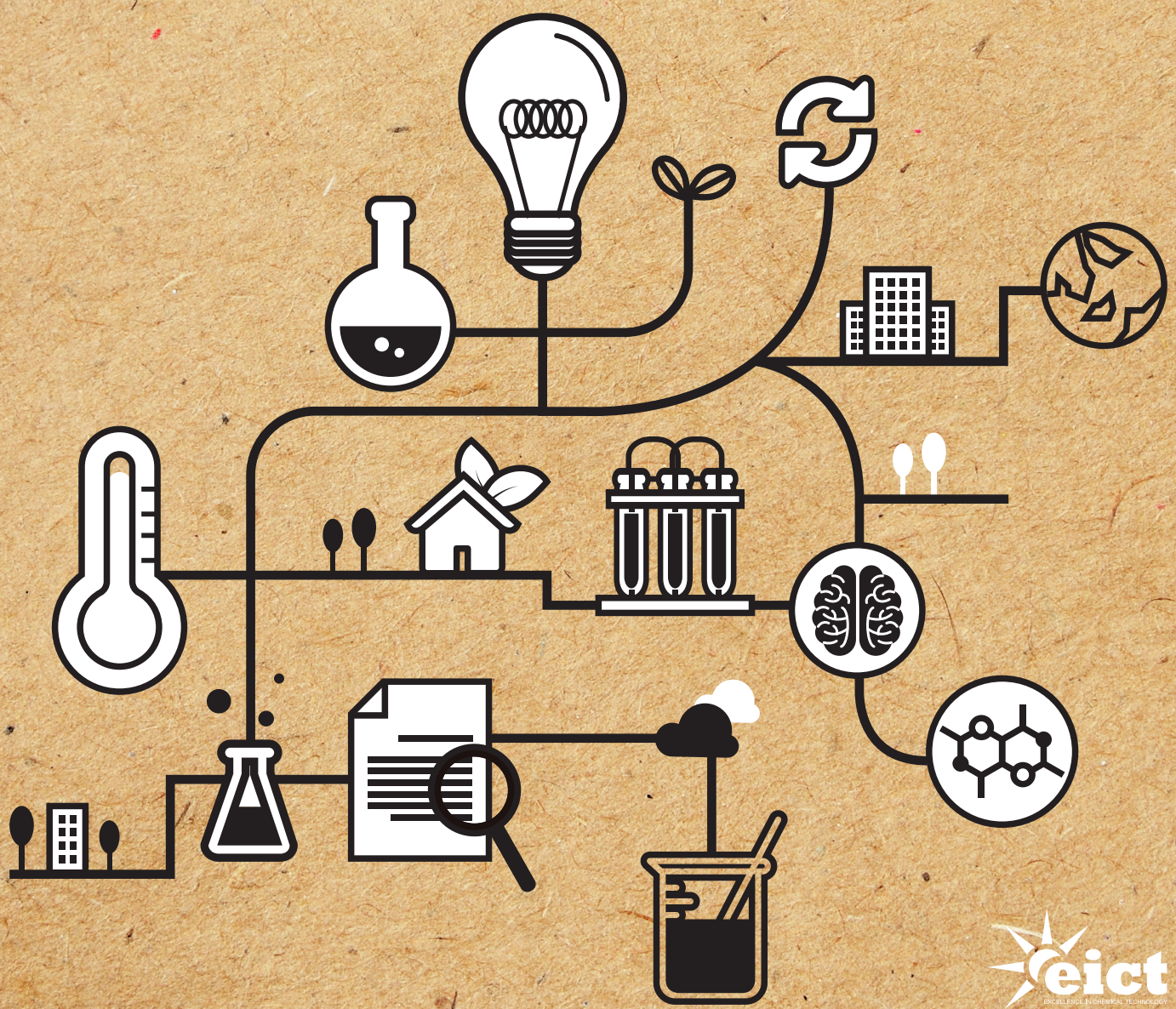


Excellence In Chemical Technology

Adhesive / Die Attach / UV Photonic / UT/UC Series / Underfill / Electronic





**Excellence In
Chemical Technology**
We Exist On Your Trust!

The Meaning Of Eict Logo



The solar light and dynamic shape of the company logo symbolizes the high-tech look of expertise and innovative technology development.

Overall, the excellence and professionalism using the simple form and sophisticated lines worded (EICT) is shown.

Logotype represents the delicate technology and green color to the continued growth of the A-class technology to visualize the dynamic image of the brand have been expressed.

The output using the simple made logo-type image captures and balances the modern and stylish fonts.

KOREA

20-16, Seoku-dong, Hwaseong-si, Gyeonggi-do,
Republic of Korea, 18449 (35, Samsung 1-ro 4-gil)
TEL : 82-70-5101-4880 FAX : 82-505-365-6364

CHINA-Shanghai

Rm402C, No.8, Lane 1226, Zhen Nan Rd., Shanghai,
China. 201101
TEL : +86-521-6258-5565 FAX : 021-6232-8091



Global technology needs in order to make the future.



We Exist On Your Trust!

VISION & POLICY STATEMENTS

- 04 Mission Statement & CEO message
- 06 Vision & Code of Conduct

COMPANY PROFILE

- 08 History & Certificates
- 10 Distribution Network

PRODUCT LINE-UP

- 14 Adhesive
- 16 Die Attach Adhesive
- 18 UV Photonic
- 19 UC/UT Series
- 20 Underfill
- 21 Electronic Adhesive

Company Facilities



- Founded in Aug. 2007
- Venture & Inno-Biz Company
(Certified by Government)
- Application
 - Semiconductor packaging materials.
 - Electronics board level assembly materials.
 - Automotive component chemical materials.
 - Industrial chemical materials.
- Major Products
 - Adhesives / Die Attach
 - UV Photonics / Underfills
 - Encapsulants / Others

Open EICT, With EICT

E

We deliver consistent product quality and fast superior technical Support no matter where our customers are located

The company makes one-step faster responses by accurately finding out the needs of customers, and sustains the competitive edge with the excellent quality and prompt development response capability.

EICT strives to be a sound company with customer-oriented differentiated growth. EICT is growing into the best of endeavors for its growth.

We will never stop until we meet the expectation from the customers and accomplish our goal of 'customer satisfaction'.

Martin Han

I

C

T

Our mission is to deliver high-quality technology solutions that enable our customers to meet their design and process goals more effectively.

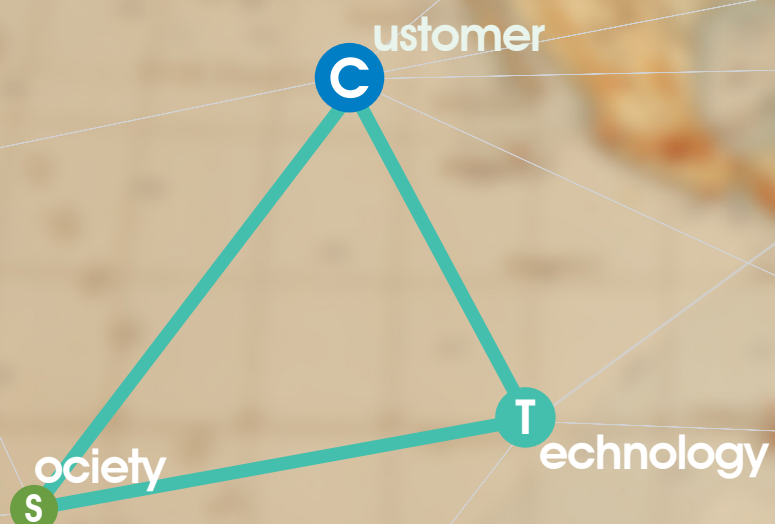
EICT is committed to supporting our customers' requirements by delivering cost effective, ethical, reliable, and high quality solutions of exceptional value through our dedicated workforce.

H.

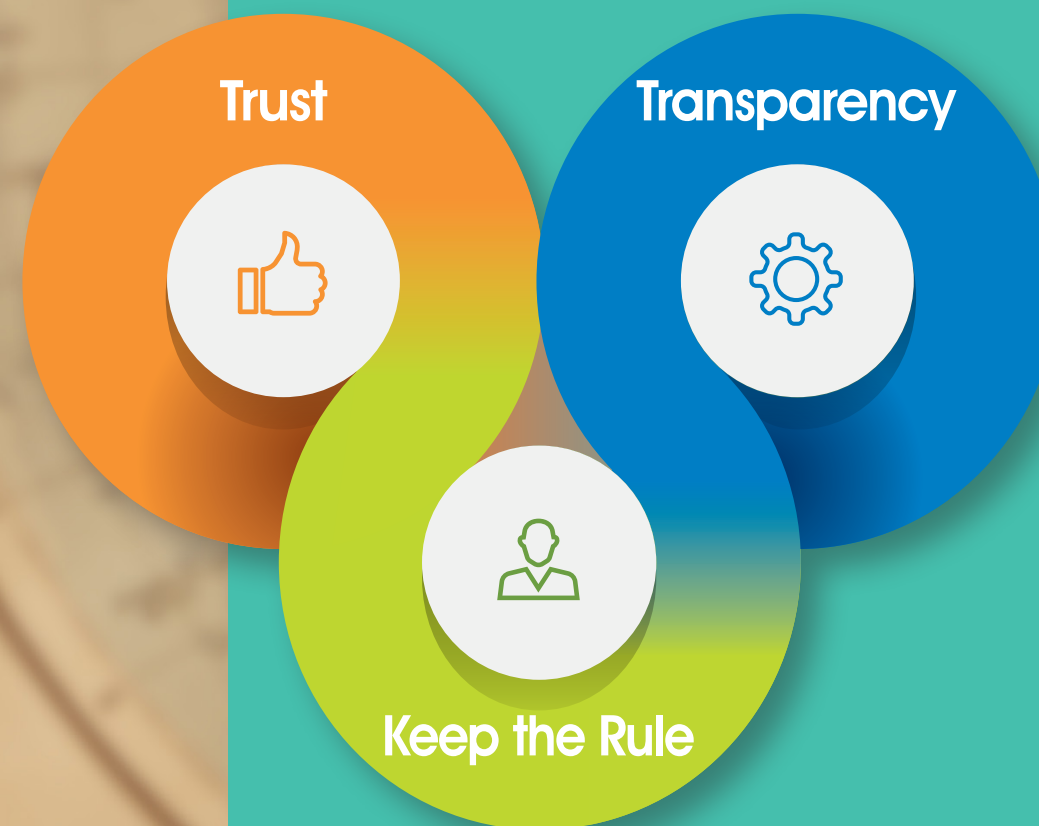
05

Customer Society Technology

Contribute to the growth of society through creating innovative technologies and products based on the spirit of human respect



Global Chemical Material Supplier



We are Excellence In Chemical Technology!

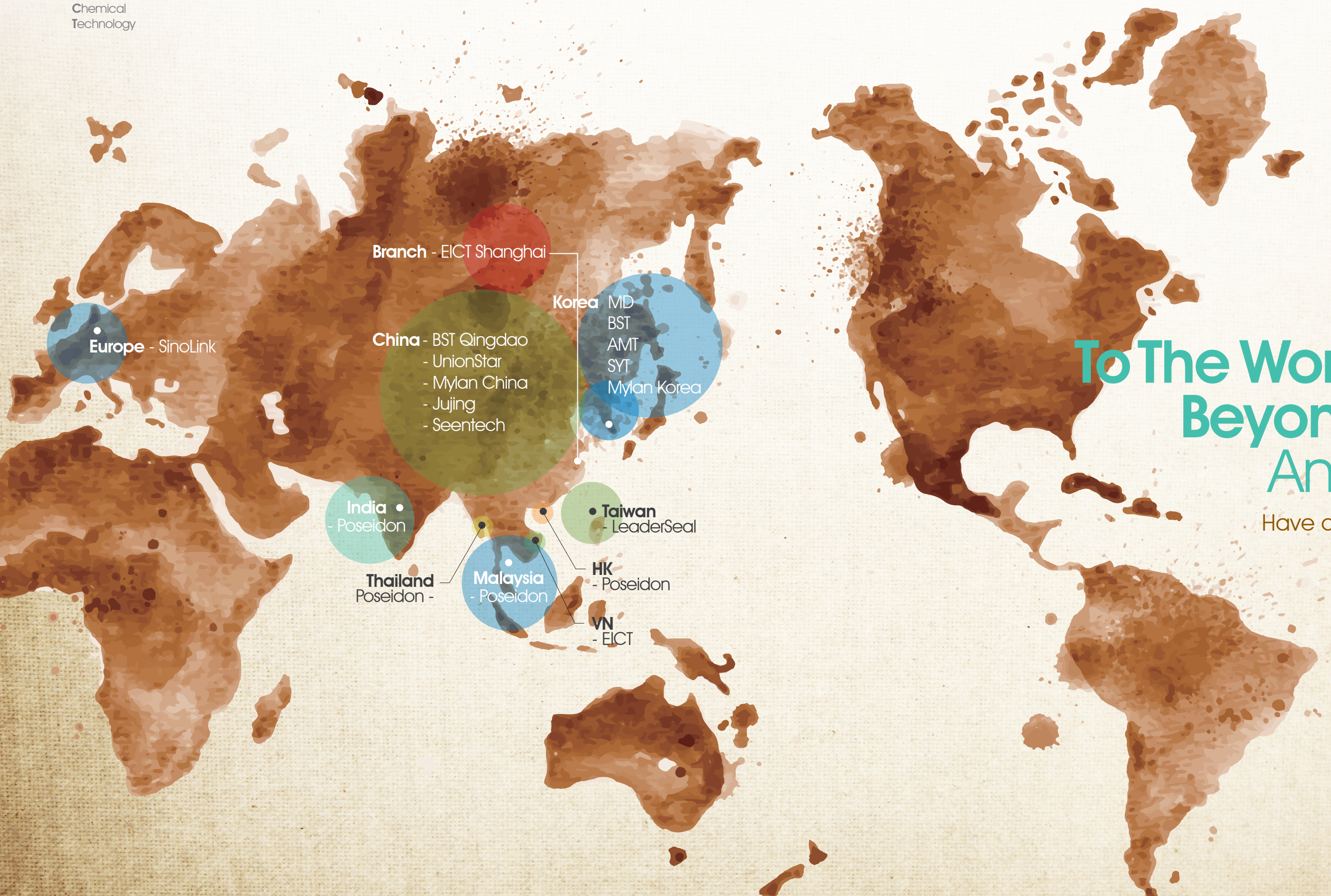
_ History

- | | |
|---|--|
| <p>2019</p> <p>2018</p> <p>2017</p> <p>2016</p> <p>2015</p> <p>2014</p> <p>2012</p> <p>2011</p> <p>2010</p> <p>2009</p> <p>2008</p> <p>2007</p> <p>2006</p> | <p>03 Participate in Shanghai Exhibition in New International Expo Centre</p> <p>03 Participate in Shanghai Exhibition in New International Expo Centre Groundbreaking ceremony of EICT Company building</p> <p>12 'Five Million Dollars Tower of Exports' The 55nd Annual Trade Day</p> <p>09 Participate in Productronica 2018 in India Relocation of the office building</p> <p>12 'Three Million Dollars Tower of Exports' The 54nd Annual Trade Day</p> <p>08 Participate in Atem Fair in Ilsan KINTEX</p> <p>03 Participate in Shanghai Exhibition in New International Expo Centre</p> <p>03 Participate in Shanghai Exhibition in New International Expo Centre</p> <p>01 Established EICT (Yantai) Advanced Materials Co. Ltd. in China. Acquired through ownership a three-storey manufacturing plant to cater for local and overseas markets</p> <p>12 'One Million Dollars Tower of Exports' The 52nd Annual Trade Day</p> <p>08 Patent 'Polymer including Photopolymer resin for Adhesion composition' (Reg. No. : 10-1546625)</p> <p>03 Participate in Shanghai Exhibition in New International Expo Centre</p> <p>03 Participate in Shanghai Exhibition in New International Expo Centre</p> <p>08 Joint venture set up at Shanghai</p> <p>06 First vendor of Samsung Electronics</p> <p>2011. 08 ~ 2012. 07 Perform collaboration project between Industry and University</p> <p>10 INNOBIZ Certification by KIBO</p> <p>04 Certification of R&D center'</p> <p>06 Patent 'Low temperature curable thermo-set type epoxy formulation & its manufacturing (Reg. No. : 10-0901854)</p> <p>04 ISO 14001:2004 (Environment Management System Certificate)</p> <p>03 ISO 9001:2008 (Quality System Certificate)</p> <p>08 'Certificate of Trademark Registration' (Reg. No. : 40-0757583)</p> <p>07 'Certificate of Service Mark registration' (Reg. No. : 41-0171252)</p> <p>09 Venture Company Certification by KIBO</p> <p>08 Name change to EICT Korea Co., Ltd.</p> <p>12 EICT Established</p> |
|---|--|

Certificates that are trusted

EICT is directed to the growth of trust





**To The World and
Beyond Here
And Now!**

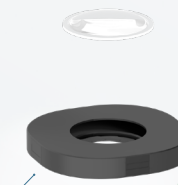
Have distribution network

Product Line-Up

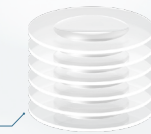
Camera Module
Application



Aperture bonding
(AD Series)



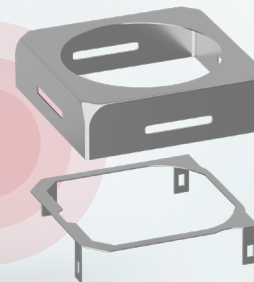
Deco lens bonding
(AD Series)



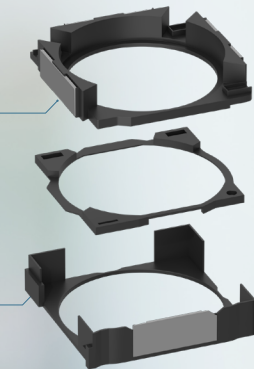
Lens bonding
(AD/UV/UT Series)



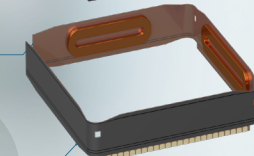
Magnet bonding
(AD Series)



Actuator housing bonding
(AD Series)



Coil bonding
(AD Series)



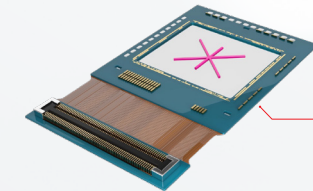
IR filter (AD / UV Series)



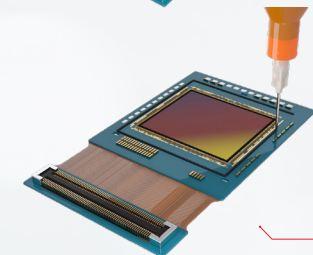
FPCB bonding (AD Series)



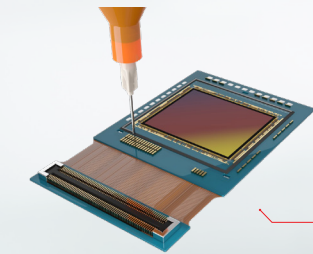
Die attach
(DA Series)



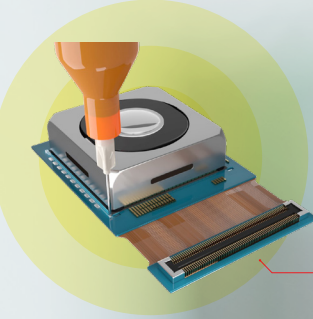
Housing attach
(AD Series)



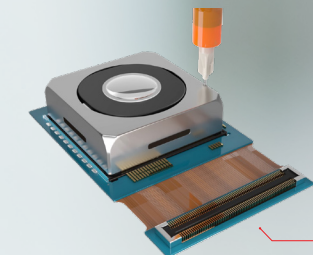
Active alignment
(UT Series)



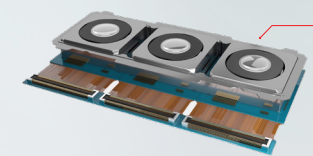
Flange bonding
(UV Series)



Side fill
(AD series)

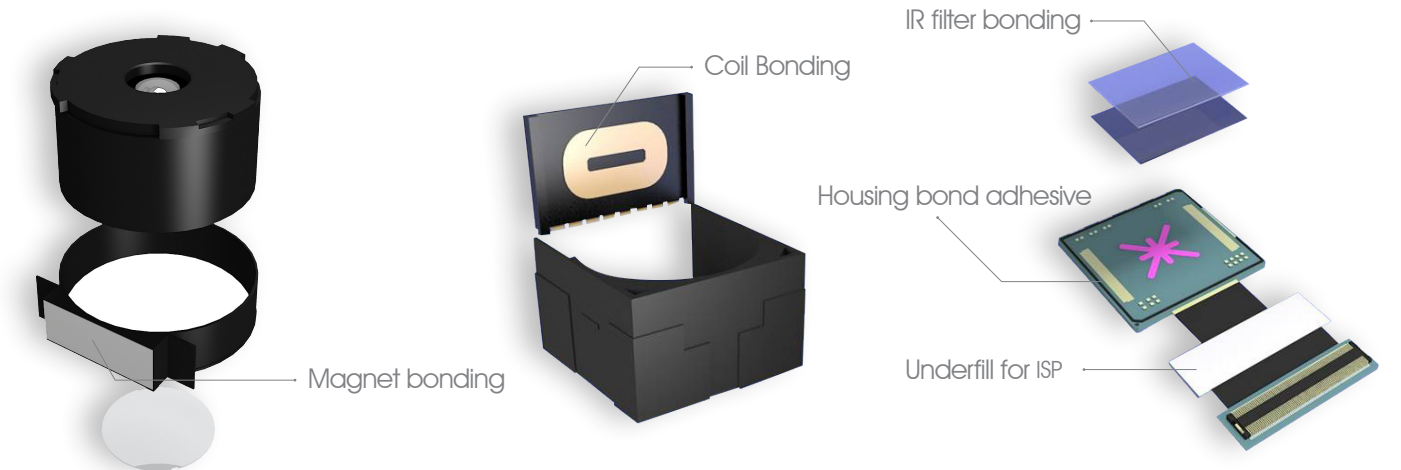


Bracket bonding
(AD/UV/UT Series)



Adhesive

Magnet Bonding / Coil Bonding / IR Filter Bonding / Housing(Holder) Attach / ISP Side Fill or Underfill

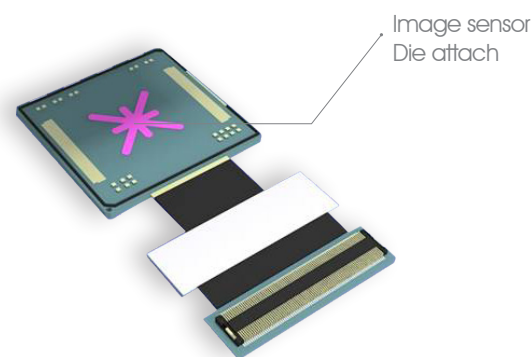


| Application | Product | Viscosity (cps @ 25°C) | T.I | Tg (°C) | Hardness (Shore D) | Work Life (Days) | Cure condition | Characteristic |
|--------------------------|--------------------------------|------------------------|-------|---------|--------------------|------------------|--|--|
| Lens barrel bonding | AD-1057 | 6,000 | 1.0 | 55 | 83 | 3 | Convection Oven 30m @ 80°C | Fixture bonding |
| | AD-1057(S40) | 7,000 | 1.2 | 55 | 80 | 3 | Convection Oven 30m @ 100°C | Screw gap fixture with 40µm polymer spacer |
| | AD-1331FLV | 3,600 | 3.1 | 45 | 85 | 2 | Convection Oven 30m @ 80°C or Hot Plate 30s @ 120°C | Lower viscosity than AD-1331FL(S) |
| | AD-1392 | 15,500 | 4.7 | 27 | 46 | 2 | Convection Oven 30m @ 80°C or Hot Plate 5m @ 80°C or Hot Plate 30s @ 120°C | Good Impact resistance, Stress relaxation |
| | AD-1068LB | 4,400 (20rpm) | 1.3 | 45 | 83 | 2 | Convection Oven 15m @ 80°C or Hot Plate 120s @ 120°C | Prevention of light leakage, Jet dispensable |
| | IR-filter glass / film bonding | AD-1067 | 2,300 | 1.2 | 41 | 78 | 2 | Convection Oven 30m @ 80°C |
| AD-1368 | | 9,000 (20rpm) | 1.0 | 36 | 75 | 1 | Convection Oven 30m @ 80°C or Hot Plate 5m @ 80°C | Anti-flare, Excellent matte black |
| AD-1375L | | 7,400 | 4.4 | 15 | 48 | 2 | Convection Oven 40m @ 60°C or Hot Plate 5m @ 70°C | Fast curable, High adhesion |
| AD-1377 | | 2,050 | 0.8 | 21 | 50 | 2 | Convection Oven 40m @ 60°C or Hot Plate 5m @ 70°C | Lower viscosity than AD-1375L |
| Side fill sealing | AD-1075 | 8,000 | 3.0 | 43 | 82 | 3 | Convection Oven 45m @ 90°C or Convection Oven 20m @ 120°C | Reinforcing & sealing for ISP, Good workability |
| | AD-1075F | 9,000 | 2.5 | 18 | 50 | 2 | Convection Oven 45m @ 90°C | Reinforcing & sealing for ISP, Low hardness |
| Actuator fixtuer bonding | AD-1046H | 14,000 | 5.5 | 35 | 77 | 4 | Convection Oven 30m @ 85°C | Fixture bonding |
| | AD-1080F | 24,000 | 4.2 | 28 | 80 | 2 | Convection Oven 30m @ 85°C | Fixture bonding |
| | AD-1200PCW | 12,000 | 3.5 | 45 | 87 | 2 | Convection Oven 20m @ 60°C or Hot Plate 3m @ 110°C | Good adhesion with PC, White color |
| | AD-1302 | 5,300 | 1.1 | 130 | 96 | 3 | Convection Oven 15m @ 150°C or Convection Oven 30m @ 120°C | PCB fixture bonding, Good Heat resistance, Low viscosity |
| | AD-1341 | 48,000 | 4.0 | 53 | 90 | 3 | Convection Oven 30m @ 85°C | High viscosity, High modulus |
| | AD-1357 | 14,000 | 4.5 | 38 | 60 | 3 | Convection Oven 60m @ 75°C or Hot Plate 4m @ 90°C | Good Impact resistance |
| | AD-1384LR | 3,800 | 2.7 | 39 | 75 | 3 | Convection Oven 30m @ 80°C or Hot Plate 5m @ 80°C | High adhesion, Low viscosity |

| Application | Product | Viscosity (cps @ 25°C) | T.I | Tg (°C) | Hardness (Shore D) | Work Life (Days) | Cure condition | Characteristic |
|--------------------------|--------------|------------------------|-----|---------|--------------------|------------------|---|--|
| Actuator fixture bonding | AD-1386M | 11,500 | 4.7 | 41 | 85 | 5 | Convection Oven 30m @ 85°C or Convection Oven 20m @ 100°C | Excellent adhesion for metal |
| | AD-1390H | 16,000 | 5.3 | 17 | 45 | 2 | Convection Oven 30m @ 80°C or Hot Plate 5m @ 80°C | Good Impact resistance, Stress relaxation |
| | AD-1612HR | 23,000 | 6.6 | 35 | 83 | 2 | Convection Oven 30m @ 80°C or Hot Plate 2m @ 100°C or Hot Plate 5m @ 80°C | Fast curable, Low RBO |
| | AD-1610 | 12,200 | 3.5 | 38 | 83 | 3 | Convection Oven 30m @ 80°C or Hot Plate 5m @ 120°C | Stiffener bonding, Good adhesion with SUS/PCB |
| | AD-1612HRW | 23,000 | 6.7 | 36 | 88 | 2 | Convection Oven 30m @ 80°C or Hot Plate 2m @ 100°C or Hot Plate 5m @ 80°C | White color version of AD-1612HR |
| | AD-1616HR | 25,000 | 5.5 | 46 | 80 | 2 | Convection Oven 20m @ 80°C or Hot Plate 2m @ 100°C | Fast curable, Low RBO |
| Housing assembly bonding | AD-1046H(FC) | 21,000 | 6.0 | 55 | 85 | 3 | Convection Oven 20m @ 60°C or Hot Plate 3m @ 100°C | Good adhesion with various materials |
| | AD-1290H | 25,000 | 6.5 | 28 | 72 | 3 | Convection Oven 30m @ 75°C | Good adhesion with various materials |
| | AD-1300 | 20,000 | 5.0 | 107 | 95 | 3 | Convection Oven 60m @ 85°C | Good Heat resistance, High Tg |
| | AD-1303 | 14,800 | 4.4 | 124 | 94 | 3 | Convection Oven 90m @ 85°C or Convection Oven 60m @ 100°C | Good Heat resistance, High Tg |
| | AD-1331 | 21,000 | 6.0 | 55 | 85 | 3 | Convection Oven 20m @ 80°C or Hot Plate 3m @ 100°C | Good adhesion with various materials |
| | AD-1331F | 20,000 | 6.0 | 51 | 80 | 2 | Convection Oven 20m @ 60°C or Hot Plate 40s @ 120°C | Fast cure version of AD-1331 |
| | AD-1331FL | 7,300 | 4.2 | 47 | 80 | 1 | Convection Oven 20m @ 60°C or Hot Plate 40s @ 120°C | Low viscosity version of AD-1331F |
| | AD-1331FL(S) | 6,500 | 4.3 | 44 | 85 | 2 | Convection Oven 30m @ 80°C or Hot Plate 30s @ 120°C | Improved work life, Lower viscosity than AD-1331FL |
| | AD-1335 | 25,000 | 6.0 | 55 | 83 | 3 | Convection Oven 20m @ 60°C or Hot Plate 3m @ 100°C | Good adhesion with various materials |
| | AD-1350 | 20,000 | 3.0 | 72 | 80 | 3 | Convection Oven 40m @ 80°C | Good adhesion with various materials, Mid Tg |
| | AD-1363H | 38,000 | 6.5 | 52 | 80 | 2 | Convection Oven 30m @ 85°C or Hot Plate 40s @ 120°C | Fast curable, High Thixotropy |
| | AD-1363HF | 26,000 | 5.8 | 30 | 75 | 1 | Convection Oven 30m @ 80°C or Hot Plate 30s @ 120°C | Good Impact resistance, Low hardness |
| | AD-1363PCH | 25,000 | 2.9 | 46 | 90 | 2 | Convection Oven 60m @ 60°C or Convection Oven 30m @ 85°C | Good adhesion with PC |
| | AD-1384 | 17,000 | 6.8 | 31 | 67 | 3 | Convection Oven 30m @ 80°C or Hot Plate 5m @ 80°C | High adhesion, Good reliability |
| Shutter assembly bonding | AD-1363L | 14,000 | 5.0 | 47 | 88 | 2 | Convection Oven 30m @ 80°C or Hot Plate 5m @ 80°C | Lower viscosity than AD-1363H |

Die Attach Adhesive

Image Sensor Attach



| Application | Product | Viscosity (cps @ 25°C) | T.I | Tg (°C) | Hardness (Shore D) | Work Life (Days) | Cure condition | Characteristic |
|---------------------------------|---------------|------------------------|-----|---------|--------------------|----------------------|---|---|
| Image sensor die attach bonding | DA-4001F | 20,000 | 3.3 | 55 | 83 | 1.5 | Convection Oven 5m @ 150°C or Hot Plate 2m @ 120°C | High modulus, Good Adhesion |
| | DA-4001G | 20,000 | 3.3 | 55 | 83 | 1.5 | Convection Oven 5m @ 150°C or Hot Plate 2m @ 120°C | High modulus, Good Adhesion |
| | DA-4001M | 38,000 | 4.7 | 43 | 86 | 3 | Convection Oven 10m @ 150°C or Hot Plate 2m @ 120°C | Low tilt |
| | DA-4013 | 16,000 | 5.0 | 43 | 87 | 1 | Convection Oven 15m @ 150°C | Low viscosity |
| | DA-4013W | 14,000 | 5.0 | 49 | 92 | 1 | Convection Oven 15m @ 150°C | White color version of DA-4013 |
| | DA-4051 | 14,000 | 2.6 | 42 | 80 | 3 | Convection Oven 30m @ 85°C or Hot Plate 2m @ 120°C | Low tilt, Low warpage |
| | DA-4051L | 8,000 | 3.8 | 32 | 78 | 3 | Hot Plate 2m @ 120°C | Low warpage, Low viscosity, High adhesion |
| | DA-4051FC | 17,500 | 5.5 | 31 | 75 | 3 | Hot Plate 2m @ 100°C | Low warpage, Fast cure |
| | DA-4051FC(R2) | 20,000 | 6.0 | 35 | 77 | 3 | Convection Oven 30m @ 70°C or Hot Plate 1m @ 100°C or Hot Plate 2m @ 80°C | Lower RBO than DA-4051FC |
| | DA-4051FL | 7,000 | 2.8 | 27 | 80 | 3 | Hot Plate 2m @ 120°C | Low warpage, Low viscosity, Fast cure |
| | DA-4051L(P) | 8,100 | 3.6 | 38 | 75 | 3 | Hot Plate 2m @ 100°C | Pink color of DA-4051L |
| | DA-4055 | 37,000 | 6.1 | 23 | 68 | 3 | Hot Plate 2m @ 100°C | Fast curable, Low warpage, Low Tilt |
| | DA-4100 | 2,200 (100rpm) | 3.4 | 24 | 85 | 3 | Hot Plate 2m @ 120°C | Self leveling |
| | DA-4100(S25) | 2,400 (100rpm) | 3.2 | 24 | 82 | 3 | Hot Plate 2m @ 120°C | Self leveling, Low Warpage with 25µm polymer spacer |
| | DA-4052 | 15,900 | 5.3 | 39 | 66 | 3 | Hot Plate 2m @ 100°C | Low warpage, Higher adhesion than DA-4051FC |
| DA-4057 | 8,600 | 3.2 | 46 | 75 | 3 | Hot Plate 2m @ 100°C | Low RBO of DA-4051L | |



We deliver consistent product quality and fast superior technical Support no matter where our customers are located.

UV Photonics

Fixture Bonding / Lens Fixture Bonding / IR Filter Bonding / ISP Underfill / Underfill



| Application | Product | Viscosity (cps @ 25°C) | T.I | Tg (°C) | Characteristic |
|----------------------------|--------------|------------------------|-----|---------------------------------------|---|
| Lens barrel & Lens bonding | UV-1061 | 10,000 | 3.0 | 51 | High adhesion, Good impact resistance |
| | UV-3083LF | 1,700 | 2.2 | 51 | High adhesion with Glass/PC |
| | UV-3091 | 6,000 | 5.7 | 61 | High adhesion, High hardness |
| | UV-3091F | 4,500 | 3.3 | 61 | High adhesion, High hardness, fluorescent substance, Anti-flare |
| | UV-3091F(TF) | 5,100 | 3.8 | 75 | High adhesion, High hardness, fluorescent substance, Tin free |
| | UV-3093HF | 11,000 | 4.5 | 61 | High adhesion, High hardness, fluorescent substance, Anti-flare |
| | UV-3206L | 6,000 | 5.0 | 57 | High adhesion, Good impact resistance |
| | UV-3209 | 3,500 | 3.2 | 42 | High adhesion, Good impact resistance, High elongation |
| | UV-3209M | 7,000 | 2.1 | 37 | High adhesion, Good impact resistance, High elongation |
| | UV-3209ML | 4,800 | 1.6 | 41 | High adhesion, Good impact resistance, High elongation |
| | UV-3209MH | 12,000 | 2.5 | 37 | High adhesion, Good impact resistance, High elongation |
| | UV-3209H | 16,000 | 2.3 | 31 | High adhesion, Good impact resistance, High elongation |
| | UV-3231 | 11,000 | 5.5 | 43 | Reworkable, Good impact resistance |
| | UV-3231H | 14,000 | 5.5 | 25 | Reworkable, Good impact resistance, Low Tg |
| 123095 | 10,000 | 2.5 | 55 | High adhesion, Good impact resistance | |
| 123095L | 8,000 | 2.0 | 60 | High adhesion, Good impact resistance | |
| 123206H | 12,000 | 6.3 | 51 | High adhesion, Good impact resistance | |

| Application | Product | Viscosity (cps @ 25°C) | T.I | Tg (°C) | Characteristic |
|--------------------------------|---------------|------------------------|-----|---------|---|
| Lens bonding for without ring | UV-3083LB(MS) | 10,000 | 2.8 | 34 | Black color, Anti flare, High adhesion, Good impact resistance |
| | UV-3091B | 5,500 | 5.5 | 51 | Black color, Anti flare, High adhesion, Low volume cure shrinkage |
| | UV-3091BL | 1,800 | 1.0 | 50 | Blue color, High adhesion |
| IR-filter glass / film bonding | UV-3100H | 18,000 | 6.0 | 44 | Low hardness, High adhesion |
| | UV-3222 | 21,000 | 0.9 | 32 | Low outgassing, Fume free |
| | UV-3386 | 10,000 | 1.5 | 68 | High adhesion with PA and LCP, Good impact resistance |
| Flange / Bracket bonding | UV-3209M | 7,000 | 2.1 | 37 | High adhesion, Good impact resistance, High elongation |
| | UV-3209K | 2,200 | 2.2 | 54 | High adhesion with PC and Metal, Good workability |
| | UV-3209HK | 3,800 | 2.3 | 67 | High adhesion with PC and Metal |
| | UV-3209TK | 3,900 | 3.8 | 93 | High adhesion with PC and Metal, High Tg |
| | UV-6101 | 25,000 | 4.6 | 27 | High adhesion with PC and Metal |
| | UV-6101L | 9,200 | 3.3 | 43 | High adhesion with PC and Metal |
| Actuator fixtuer bonding | UV-6101M | 21,000 | 3.4 | 29 | High adhesion with PC and Metal |
| | UV-3307H | 20,000 | 6.6 | 35 | Spring bonding, Good toughening, High adhesion with metal |
| Dust Capturing adhesive | UV-3307L | 3,100 | 1.5 | 37 | Spring bonding, Good toughening, High adhesion with metal |
| | UV-3530 | 2,000 | 0.9 | -10 | High stickiness |
| | UV-3530B | 2,600 | 1.0 | -28 | Black color, High stickiness |
| | UV-3530BH | 2,200 | 2.6 | -6 | Black color, High stickiness |

NEW! UC / UT Series

| Application | Product | Viscosity (cps @ 25°C) | T.I | Tg (°C) | Characteristic |
|----------------------------|----------|------------------------|-----|---------|---|
| Focus fixing bonding | UC-3207R | 27,000 | 4.3 | 73 | Dual curable, High adhesion, High hardness, Good water proofing |
| Lens barrel & Lens bonding | UC-3218L | 9,000 | 4.9 | 36 | High adhesion, Good impact resistance |

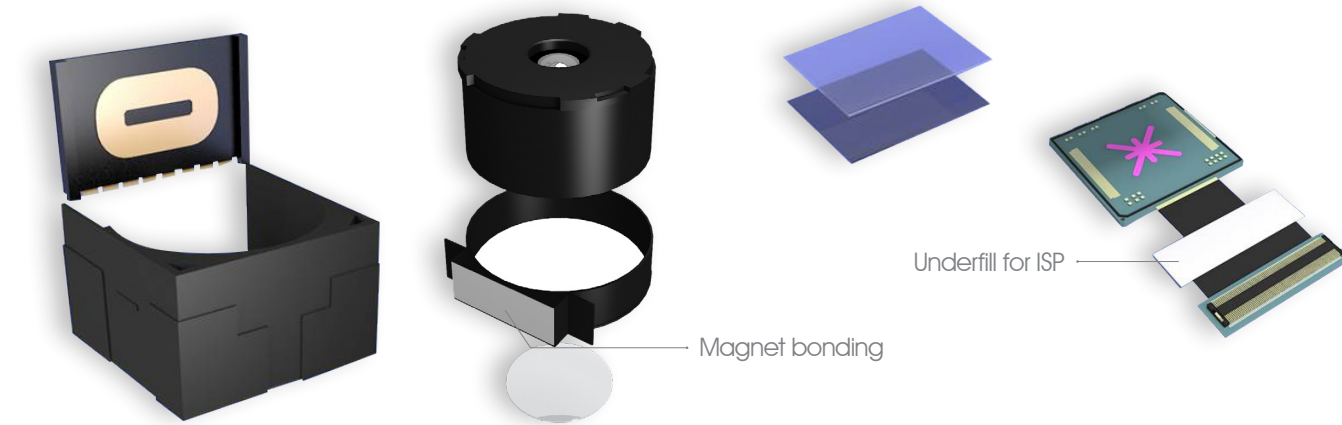
| Application | Product | Appearance | Viscosity (cps @ 25°C) | T.I | Tg (°C) | Work Life (Days) | Cure condition | Characteristic |
|--------------------------------|----------|-------------|------------------------|-----|---------|------------------|--|---|
| Active alignment | UT-5022H | Gray | 35,000 | 6.0 | 56 | 2 | 365nm LED 3,000mj + Convection Oven 60m @ 80°C | Low volume cure shrinkage, Anti flare, High adhesion |
| | UT-5023B | Black | 51,000 | 6.0 | 85 | 3 | 365nm LED 3,000mj + Convection Oven 60m @ 80°C | Low volume cure shrinkage, Anti flare, High adhesion |
| | UT-5500 | Black | 41,000 | 5.5 | 52 | 2 | 365nm LED 3,000mj + Convection Oven 60m @ 80°C | High adhesion with PA and PC, Low volume cure shrinkage |
| | UT-5508 | Black | 50,000 | 5.6 | 57 | 2 | 365nm LED 3,000mj + Convection Oven 60m @ 80°C | High adhesion with PA and PC, Low volume cure shrinkage |
| | UT-5122H | Gray | 50,000 | 6.0 | 51 | 2 | 365nm LED 3,000mj + Convection Oven 60m @ 70°C | Low temperature curable, High adhesion with LCP and PC, Low volume cure shrinkage |
| IR-filter glass / film bonding | UT-6000 | Pale yellow | 10,000 | 4.0 | 41 | 3 | 365nm LED 3,000mj + Convection Oven 30m @ 80°C | Fast curable, High adhesion |
| | UT-5021 | Transparent | 14,000 | 1.0 | 39 | 3 | 365nm LED 3,000mj + Convection Oven 40m @ 90°C | Low T.I, Fume free, High adhesion |

Electronic Adhesive

Automotive / Display / Speaker / Mobile Phone / Smart Card

Underfill

Magnet Bonding / ISP Underfill / Underfill



| Application | Product | Appearance | Viscosity (cps @ 25°C) | T.I | Tg (°C) | Hardness (Shore D) | Work Life (Days) | Cure condition | Characteristic |
|-----------------------------------|---------------|--------------|------------------------|-----|---------|--------------------|----------------------------|---|---|
| FPCB neck bonding | UF-2087 | Transparent | 2,000 | 1.0 | 32 | 76 | 2 | Convection Oven 50m @ 80°C | Good adhesion with FPCB, Fast curable |
| | UF-2089 | Transparent | 9,000 | 4.0 | 24 | 60 | 3 | Convection Oven 45m @ 95°C or Convection Oven 20m @ 150°C | Good adhesion with FPCB, Low hardness |
| | UF-2089F | Transparent | 13,000 | 4.3 | 25 | 67 | 3 | Convection Oven 50m @ 80°C | Good adhesion with FPCB, Fast curable, Low hardness |
| Filling for Encoder type Actuator | TU-1900 | Transparent | 2,500 | 1.7 | 30 | 76 | 3 | Convection Oven 60m @ 85°C | Good adhesion with LCP, Low viscosity |
| | TU-1900F | Transparent | 4,400 | 1.0 | 33 | 75 | 3 | Convection Oven 40m @ 85°C | Good adhesion with LCP, Fast curable |
| Filling for VCM type Actuator | TU-1904 | Transparent | 9,000 | 0.7 | 49 | 85 | 4 | Convection Oven 30m @ 85°C | Good adhesion with PA and LCP |
| | TU-1904(R11) | Ivory | 3,000 | 0.8 | 41 | 75 | 3 | Convection Oven 30m @ 80°C | Low viscosity, Low RBO |
| | TU-1904(R61) | Light yellow | 6,600 | 0.9 | 31 | 76 | 3 | Convection Oven 40m @ 80°C or Hot Plate 2m @ 100°C | Medium viscosity, Low RBO |
| | TU-1904J | Transparent | 2,200 | 0.9 | 53 | 85 | 3 | Convection Oven 30m @ 75°C | Low viscosity |
| | TU-1904J(R12) | Ivory | 2,000 | 0.8 | 48 | 80 | 3 | Convection Oven 30m @ 80°C | Low viscosity, Low RBO |
| | TU-1908 | Black | 3,300 | 0.9 | 30 | 80 | 3 | Convection Oven 30m @ 85°C | Good adhesion with PA and LCP |
| | TU-1928H | Black | 2,000 | 1.3 | 40 | 80 | 7 | Convection Oven 30m @ 80°C | Good adhesion with PA and LCP, Low viscosity |
| | TU-1928(R63) | Black | 2,000 | 1.1 | 38 | 75 | 3 | Convection Oven 30m @ 80°C | Good adhesion with PA and LCP, Low RBO |
| | TU-1914 | Ivory | 2,550 | 1.0 | 42 | 76 | 3 | Convection Oven 30m @ 80°C | Good adhesion with PA and LCP, Flow controlled |
| TU-1914R | Ivory | 2,780 | 1.0 | 42 | 74 | 3 | Convection Oven 30m @ 80°C | Good adhesion with PA and LCP, Low RBO | |

Adhesives for fingerprint sensor

| Application | Product | Appearance | Viscosity (cps @ 25°C) | T.I | Tg (°C) | Hardness (Shore D) | Work Life (Days) | Cure condition | Characteristic |
|---------------------------|-----------|-------------|------------------------|-----|---------|--------------------|------------------|--|--|
| Fixtuer bonding | AD-1375HW | Ivory | 20,000 | 5.5 | 63 | 14 | 2 | Convection Oven 30m @ 70°C or Hot Plate 150s @ 70°C | Good impact resistance, Low RBO |
| | AD-1620 | Black | 67,000 | 1.1 | 90 | 50 | 3 | Convection Oven 30m @ 80°C or Hot Plate 120s @ 120°C | Good adhesion with PC/SUS, High Viscosity |
| | TU-1930 | Pale peach | 1,350 (20rpm) | 0.8 | 75 | 43 | 2 | Convection Oven 30m @ 85°C or Hot Plate 2m @ 120°C | Good adhesion |
| Sensor die attach bonding | UC-3216 | Pale yellow | 4,000 | 2.0 | 75 | 75 | 10 (Hours) | 365nm LED 3,000mj | Dual curable, High adhesion, Good water proofing |
| | DA-4051L | Red | 8,000 | 3.8 | 78 | 32 | 3 | Hot Plate 2m @ 120°C | Low warpage, Low viscosity, High adhesion |
| | DA-4051FC | Pink | 17,500 | 5.5 | 75 | 31 | 3 | Hot Plate 2m @ 100°C | Low warpage, Fast cure |

Underfill adhesives

| Application | Product | Appearance | Viscosity (cps @ 25°C) | T.I | Tg (°C) | Hardness (Shore D) | Work Life (Days) | Cure condition | Characteristic |
|--------------------------------|-------------|-------------|------------------------|-----|---------|--------------------|------------------|---|---|
| Underfill for BGA/CSP/ WL-CSP | UF-1083 | Black | 1,300 (20rpm) | 1.0 | 38 | 83 | 7 | Convection Oven 30m @ 95°C | Low temperature curable |
| | UF-1083C | Amber | 1,300 (20rpm) | 1.0 | 37 | 80 | 7 | Convection Oven 30m @ 95°C or Convection Oven 15m @ 125°C or Reflow Oven 5m @ 150°C | Clear version of UF-1083 |
| | UF-2082 | Transparent | 1,000 (20rpm) | 1.0 | 71 | 87 | 3 | Convection Oven 15m @ 150°C or Reflow Oven 8m @ 130°C or Reflow Oven 8m @ 140°C | Mid Tg, Fast Flow |
| | UF-2030T2-2 | Black | 1,100 | 1.0 | 176 | 95 | 30 | Convection Oven 20m @ 140°C | Reworkable, High Tg |
| | UF-2230 | Black | 330 | 0.7 | 106 | 90 | 3 | Convection Oven 15m @ 130°C | Reworkable, Very low viscosity, Fast Flow |
| Underfill for Flipchip package | UFC-2740B | Black | 8,000 | 1.1 | 95 | 95 | 1 | Convection Oven 30m @ 150°C | High reliability, Low RBO, Fast Flow |
| | UFC-2801 | Black | 8,000 | 1.0 | 120 | 90 | 1 | Convection Oven 40m @ 125°C | High reliability, Low RBO, Fast Flow |
| | UFC-2803 | Black | 11,000 | 1.0 | 161 | 98 | 1 | Convection Oven 10m @ 165°C | High reliability, High Tg, Fast Flow |

Adhesives for electronic assembly – Heat cure adhesives

| Application | Product | Appearance | Viscosity (cps @ 25°C) | T.I | Tg (°C) | Hardness (Shore D) | Work Life (Days) | Cure condition | Characteristic |
|----------------------------|-----------------|-------------|------------------------|-----|---------|--------------------|------------------|--|--|
| Liquid Encapsulant | FL-5060 | Black | 50,000 | 1.3 | 50 | 85 | 5 | Convection Oven 10m @ 70°C | Low temperature curable |
| | FL-5061 | Black | 7,200 | 0.9 | 46 | 83 | 2 | Convection Oven 15m @ 100°C | Good workability |
| | FL-5065 | Black | 35,000 | 1.7 | 113 | 95 | 2 | Convection Oven 15m @ 100°C | High reliability, High Tg |
| | OP-6007 | Transparent | 900 | 0.9 | 29 | 22 | 12 | Convection Oven 120m @ 100°C | Transparent encapsulant, Low hardness |
| Glob top encapsulant | GT-40W | White | 3,000 | 1.4 | N/A | 35 (A) | 3 | Hot Plate 15s @ 200°C | Low hardness |
| | GT-55 | Black | 10,000 | 1.1 | 110 | 88 | 3 | Convection Oven 40m @ 110°C | Good adhesion, Low RBO |
| | GT-60 | Black | 10,000 | 1.8 | 100 | 98 | 2 | Convection Oven 30m @ 100°C | Good adhesion |
| | GT-65 | Black | 10,000 | 1.5 | 127 | 99 | 1 | Convection Oven 60m @ 150°C | Good adhesion, High Tg |
| Sealing / Bonding | IB-7111 | Black | 7,000 | 2.2 | 145 | 98 | 7 | Reflow Oven 4m @ 150°C | Good adhesion, High Tg |
| | IB-7590 | White | 127,000 | 3.4 | 120 | 85 | 7 | Convection Oven 120m @ 120°C | Good adhesion with metal |
| | IB-7594 | Black | 83,000 | 1.1 | 190 | 98 | 2 | Convection Oven 10m @ 170°C | High reliability, High Tg, Good water proofing |
| | IB-7700F | Black | 260,000 | 0.8 | 60 | 99 | 2 | Convection Oven 30m @ 100°C | Good adhesion, Low CTE |
| DA adhesive for LED | IB-7777D | Blue | 16,000 | 4.4 | N/A | 65 (A) | 6 (Months) | Convection Oven 30m @ 150°C | Reworkable, Low hardness |
| | IB-7597 | White | 17,000 | 1.0 | 180 | 95 | 3 | Convection Oven 40m @ 160°C | High Tg, Low RBO, Non yellowing |
| | IB-9000(M140) | White | 20,000 | 1.6 | 120 | 95 | 3 | Convection Oven 40m @ 160°C | High Tg, Low RBO |
| B-stage DA for Semicon PKG | IB-9000(M140-3) | White | 27,000 | 2.1 | 120 | 95 | 3 | Convection Oven 40m @ 160°C | High Tg, Low RBO, Non yellowing |
| | BA-1603 | Transparent | 27,000 | 3.5 | -25 | 25 (A) | 2 | B-stage cure : 30m @ 125°C + Post cure : 30m @ 175°C | High reliability |
| Microspeaker bonding | BA-1604B | Black | 13,000 | 3.5 | -25 | 25 (A) | 2 | B-stage cure : 30m @ 125°C + Post cure : 30m @ 175°C | High reliability |
| | AD-1620 | Black | 67,000 | 1.1 | 50 | 90 | 3 | Convection Oven 30m @ 80°C or Hot Plate 2m @ 120°C | High adhesion, Good reliability |

Surface mount adhesives

| Application | Product | Appearance | Viscosity (cps @ 25°C) | T.I | Tg (°C) | Hardness (Shore D) | Work Life (Days) | Cure condition | Characteristic |
|-----------------------|----------|------------|------------------------|-----|---------|--------------------|------------------|---|--------------------------------------|
| Chip bonding adhesive | CB-6506 | Red | 150,000 | 5.3 | 91 | 90 | 14 | Reflow Oven 80s @ 150°C | Good dispensing workability |
| | CB-6520 | Red | 100,000 | 7.0 | 114 | 91 | 5 | Reflow Oven 4m @ 150°C or Hot Plate 90s @ 150°C | Good dispensing workability |
| | CB-6590 | Red | 115,000 | 6.4 | 129 | 94 | 10 | Reflow Oven 90s @ 150°C | Good dispensing workability, High Tg |
| | CB-6520P | Red | 145,000 | 5.3 | 137 | 95 | 10 | Reflow Oven 90s @ 150°C | Good dispensing workability, High Tg |

Adhesives for display

| Application | Product | Viscosity (cps @ 25°C) | T.I | Tg (°C) | Characteristic |
|----------------------------------|-----------|------------------------|-----|---------|--|
| Bonding / Sealing for OLED panel | UV-3083H | 400 | 1.0 | 67 | Low viscosity, High adhesion with glass |
| | UV-3083V | 220 | 1.0 | 50 | Low viscosity, High adhesion with glass |
| | UV-3231C | 500 | 1.0 | 36 | Bonding for Keyboard OLED touch bar Low viscosity, Good adhesion to glass and PC |
| Bonding / Sealing for LCD panel | UV-3231LB | 760 | 1.0 | 51 | Side sealing for Notebook display Low viscosity, Good adhesion with glass and PC, Anti flare, Low transmissivity |
| | UV-6103 | 2,700 | 1.1 | 85 | Reworkable, Good adhesion with Glass and PC |
| | UV-6103M | 2,300 | 1.0 | 86 | Reworkable, Good adhesion with Glass and PC, Good water proofing |
| Gap filling for LCD panel | UV-6109W | 7,600 | 1.7 | 80 | High reflectivity, White color |
| | UC-3232 | 600 | 1.0 | 80 | High filler content, Good chemical resistance, Fast UV curable |
| OCR | UV-3400 | 1,100 | 0.9 | N/A | High Transmissivity and refractive index, Low hardness, Reworkable |

Adhesives for electronic assembly – UV or Dual curable adhesive

| Application | Product | Viscosity (cps @ 25°C) | T.I | Tg (°C) | Characteristic |
|-------------------------------------|-----------|------------------------|-----|---------|---|
| Coner bonding for BGA/CSP | UV-3200 | 16,000 | 4.0 | 67 | Low volume cure shrinkage, High adhesion with PCB |
| | UV-3200W | 18,000 | 4.5 | 83 | White color, Low volume cure shrinkage, High adhesion with PCB |
| Sealing / Bonding | UV-3085 | 10,000 | 3.0 | 48 | High adhesion, Good impact resistance |
| | UV-3089 | 8,000 | 1.5 | 49 | High adhesion, Good impact resistance |
| | UV-3101EM | 45,000 | 7.0 | 26 | Low hardness, High adhesion with plastics |
| | UV-3300 | 1,600 | 1.0 | 24 | Non yellowing |
| Bonding for Optical fiber | UV-3300M | 2,100 | 0.9 | 46 | Non yellowing, High adhesion with jewellery metals (gold & silver) |
| | UV-3111 | 13,000 | 1.7 | 62 | High adhesion with Glass |
| Dam & Fill for Smart card | UV-3111L | 4,600 | 1.4 | 62 | High adhesion with Glass |
| | UV-3723D | 8,000 | 4.2 | 37 | Black color, Good adhesion with plastics |
| Sealing / Bonding for Cable harness | UV-3723F | 850 | 1.0 | 40 | Black color. Low viscosity, Good adhesion with plastics, Good workability |
| | 125005 | 4,300 | 3.5 | 37 | High elongation, High adhesion with teflon, Low hardness |
| Screen printable UV adhesive | UC-3100 | 22,000 | 5.1 | 128 | Screen printable, Good workability, High Tg |
| Dual curable adhesive | UM-3811 | 7,000 | 2.8 | N/A | UV + Moisture dual curable |
| | UM-3811H | 15,000 | 2.6 | N/A | UV + Moisture dual curable |
| | UM-3811B | 8,000 | 2.7 | N/A | UV + Moisture dual curable, Black color |



State-of-the-Art Technology!



To The World and Beyond,
Here And Now!



**Excellence In
Chemical Technology**

We Exist On Your Trust!



KOREA

20-16, Seoku-dong, Hwaseong-si, Gyeonggi-do,
Republic of Korea, 18449 (35, Samsung 1-ro 4-gil)
TEL : 82-70-5101-4880 FAX : 82-505-365-6364

CHINA-Shanghai

Rm402C, No.8, Lane 1226, Zhen Nan Rd., Shanghai,
China, 201101
TEL : +86-521-6258-5565 FAX : 021-6232-8091